

WELCOME

V1.10.2021
**Student Orientation
(SOM and GSBS)**

Information Resources & Technology (IRT) in Support of Rowan Students (SOM and GSBS)

Stratford Campus IRT Technology Services

- We provide service and support for all technology hardware supported at RowanSOM and Rowan Medicine in academic, clinical and research offices, classrooms and computer labs.
- We support academic technology and will assist with network connectivity issues and email access.
- We provide students, faculty and staff with audio, video, photography, graphic design and printing services for conferences, professional headshots, photos and presentations.

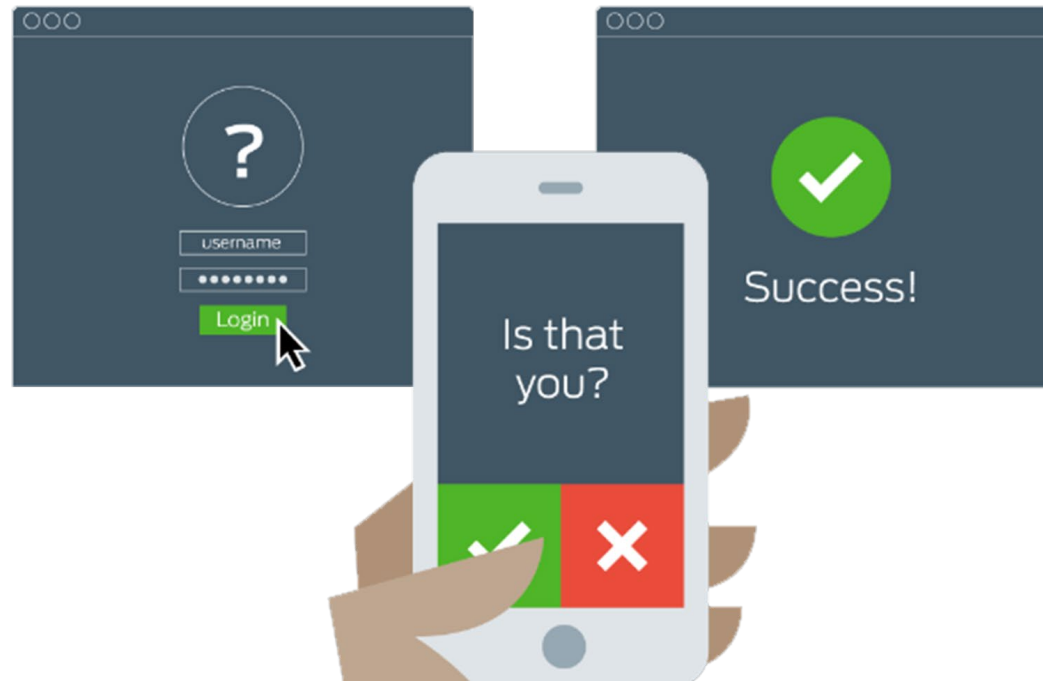
Resources for Rowan Students

Rowan University students have access to a wide range of digital resources that can help them collaborate with their classmates, communicate with their instructors and reach their academic goals. More information about these resources can be found at go.rowan.edu/students



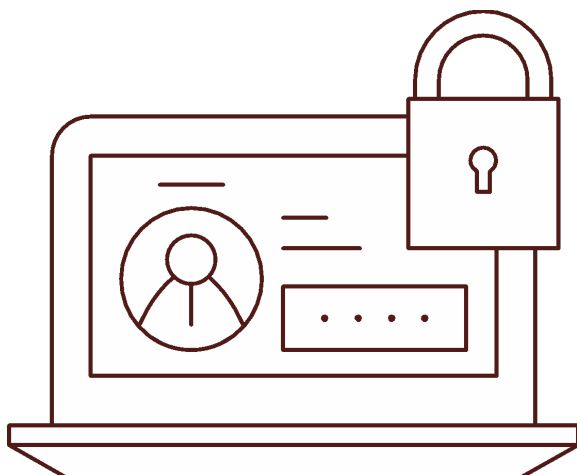
- Download and access software programs available to Rowan University students at go.rowan.edu/software.
- Collaborate in real time from anywhere and on any device, and get unlimited storage in Google Drive. Visit go.rowan.edu/google to learn more.
- Search for frequently-used applications and services and filter by campus at go.rowan.edu/login.

Get Duo Mobile: The Fastest Way to Two Step!



With Duo Mobile, you can complete two-factor authentication by approving a push notification on your smartphone, rather than waiting for a text message or answering a phone call. Visit go.rowan.edu/duo to learn more.

Your Rowan NetID & Your Banner ID



Rowan NetID:

Your Rowan NetID is your key to accessing online Rowan University services. With your Rowan NetID, you can log in to Canvas, RowanWiFi, Self-Service Banner, Google Drive, your Rowan email and Rowan-managed computers in computer labs and elsewhere. Your Rowan NetID is the first part of your Rowan-issued email address before the @ sign.

Banner ID:

Rowan University assigns a unique nine-digit Banner ID number to every member of the Rowan community. You may be asked for your Banner ID when submitting internal forms and applications or to help verify your identity.

Connecting to the Rowan Network



RowanWiFi

Students and employees who want to connect a personal device to RowanWiFi should:

1. Select **RowanWiFi**
2. Log in with your Rowan NetID

Rowan University Email

SOM and GSBS Students are provided with an Exchange email account for University communications that ends with **@rowan.edu**. This can be accessed at exchange.rowan.edu

IRT supports using the Outlook Mobile app to access your Rowan email on a mobile device. For more information about accessing your email, visit go.rowan.edu/exchange

Per the Acceptable Use Policy, you cannot automatically forward messages from your Rowan University email address to a non-Rowan email address.

Campus Computer Labs

- Academic Center, Room 273
- Academic Center mezzanine 2nd Floor across from the elevators
- 1st floor of Library in Academic Center

Lab Features

- Labs are equipped with Windows based desktop computers running MS Office Professional and instructional software, and black and white high-speed printers.
- Use your RowanCard for 24/7 access to labs. If your RowanCard does not open the door, call Public Safety at 856-256-4922.

Google Drive

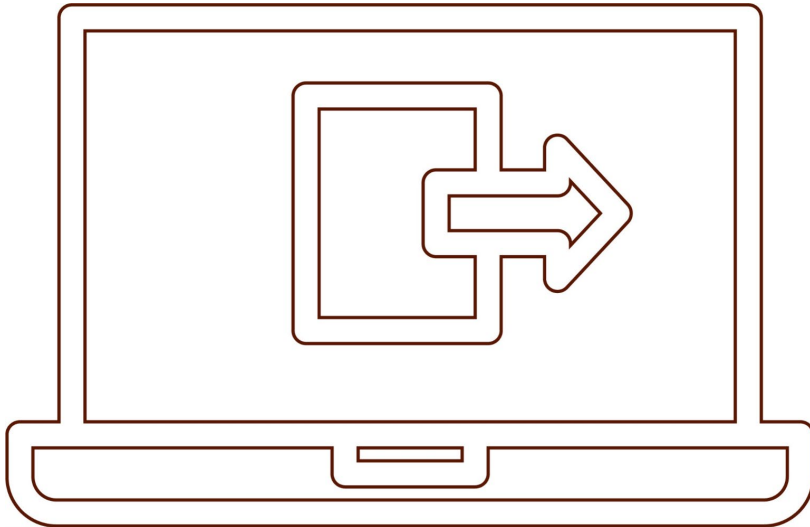
- All students have access to unlimited storage on Google Drive, which is Rowan's preferred storage method. Removable media, such as flash drives, can serve as hosts for ransomware and can lead to data loss, so we recommend using Google Drive.



RowanUniversity

INFORMATION RESOURCES & TECHNOLOGY

Log Out



It is very important to **log out of your accounts** for a number of reasons, including preventing access to your personal information.

Printing Notes (SOM Students Only)

\$40 provided to RowanSOM students per year

- Upload print jobs to Mobile Print at mobileprint.rowan.edu
- Additional pages will cost \$.10 cents per page.
- To add to the print quota, please see the cashier or go to myrowancard.rowan.edu

For more information, visit go.rowan.edu/print.

Laptop and Personal Device Use at Rowan

Information Resources & Technology is continually evaluating antivirus software options for personal use and *recommends* that students and employees use Windows Security/Windows Defender or Avast to protect their personal computers.

- In order for IRT to provide any assistance on your personal device, you **MUST** sign a Personal Device Waiver in advance at the SOM Workshop, AC/292.
- For more information about personal antivirus use, visit go.rowan.edu/antivirus

In-Person Support at SOM

The SOM Workshop is located in the Academic Center on the 2nd floor (292).

The SOM Workshop is open **by appointment only.**

To set up an appointment:

- Use one of the kiosks that are located throughout campus
- Email support@rowan.edu



RowanUniversity

INFORMATION RESOURCES & TECHNOLOGY

Phone & Email Support

Support specialists with the Technology Support Center are available by phone and email to help you answer any questions you may have about technology services and systems at Rowan University.

- **Call:** 856-256-4400
- **Email:** support@rowan.edu

Ask Susan

Susan, Rowan's digital assistant, is available 24/7 to answer your questions about technology at Rowan University. Visit go.rowan.edu/susan to start chatting.

ExamSoft

Login to the ExamSoft Portal:

SOM: examSoft.com/rowansom

GSBS: examSoft.com/rugsobs

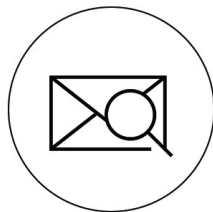
For more information on using ExamSoft, please visit go.rowan.edu/examsoft.

Don't Take the Bait!

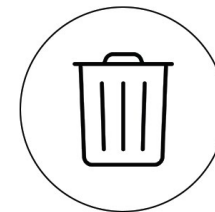
Universities are prime targets for phishing attacks. Learn how to protect your personal data.



**Verify Before You
Click or Share.**



**Look for
Red Flags.**



**When in Doubt,
Throw it Out.**

Remember, if it seems too good to be true, it probably is. For more information about Security & Safe Computing, visit

go.rowan.edu/security.

Technology Policies

Students are responsible for following University policies when accessing and using digital resources.



Rowan University policies guide and protect your use of online resources and technology. For example, under the Acceptable Use Policy:

- You cannot distribute or collect copyrighted material without the expressed and written consent of the copyright owner or without lawful right to do so.
- You cannot share passwords or leave passwords unprotected.

To review the full Acceptable Use Policy, visit go.rowan.edu/aup.

IMPORTANT TO REMEMBER

If you are going to remember anything from this presentation take note:

support@rowan.edu

856-256-4400

go.rowan.edu/techquestion